

**SCREEN SCOTLAND**  
**SGRÌN ALBA**

---

**SCOTLAND'S**  
**FILM AND TELEVISION**  
**STUDIO AND**  
**BUILDSPACE**

**OVER 10K SQ FT**

Updated: April 2024

# Welcome to Scotland

The Scottish production sector has grown significantly over the last few years, as has the infrastructure required to support this exciting growth. This document illustrates the diverse range of studio and build space facilities available to feature film and HETV productions, located in and around key production hubs in Scotland. Projects as varied as *Good Omens*, *The Rig* and *Anansi Boys* (Amazon), *Outlander* (Starz/Sony), *T2 Trainspotting* (Sony), *The Buccaneers* (Apple+) have all found homes in Scotland. We look forward to helping find a home for your production too – full details on the following pages.

—

For information on our funding programmes and other services provided by Screen Scotland, please visit our website [screen.scot](https://www.screen.scot) or contact us at [locations@creativescotland.com](mailto:locations@creativescotland.com)

# Contents

<b>BBC Scotland Dumbarton Studios</b>	<b>4</b>
<b>BBC Scotland Pacific Quay</b>	<b>6</b>
<b>The Factory Campbeltown</b>	<b>8</b>
<b>FirstStage Studios Edinburgh</b>	<b>10</b>
<b>Govan Shed Glasgow</b>	<b>12</b>
<b>Nightsky Studios Coatbridge</b>	<b>14</b>
<b>Pyramids Business Park Bathgate</b>	<b>16</b>
<b>Studioworks Kelvin Hall Glasgow</b>	<b>18</b>
<b>Wardpark Studios Cumbernauld</b>	<b>20</b>

This document is accurate at the time of publication. However, the providers are constantly developing their services and spaces so **please ensure you contact the operators directly to check your specific requirements.**

# BBC Scotland

## Dumbarton Studios



Contact	<b>Name of Site</b>	BBC Scotland - Dumbarton
	<b>Owner/Company</b>	BBC Scotland
	<b>Contact Name</b>	BBC Scotland Planning Team
	<b>Full Address</b>	BBC Scotland, Dumbarton Studios, Dumbarton G82 2AP (Exit A82 at Lomond Gate roundabout,)
	<b>Telephone</b>	
	<b>Email</b>	<a href="mailto:street.productionfacilities@bbc.co.uk">street.productionfacilities@bbc.co.uk</a>
	<b>Website</b>	<a href="http://www.bbcstreet.co.uk">www.bbcstreet.co.uk</a>
	<b>Previous Productions</b>	<i>Shetland, River City, Two Doors Down and Vigil</i>
Features	<b>Stages</b>	
	<b>Production Spaces</b>	The facility currently offers studio space of 18,000 sq ft, (1,672 sq m) build/construction space and a full size backlot.
	<b>Power</b>	3-phase
	<b>Soundproofing</b>	The studios are acoustically treated to reduce noise pollution and have a 3-phase power supply.
	<b>Blackout / Windows</b>	Yes
	<b>Office Space</b>	Yes
	<b>Vehicle Access Details</b>	Dumbarton Studios is located within 30 mins of central Glasgow, 20 mins from Glasgow Airport and 10 mins from Loch Lomond and the Gateway to the Highlands.
	<b>Parking</b>	Ample
	<b>Backlot / Hard Standing</b>	Full size backlot
	<b>Telecoms</b>	
	<b>Additional Features</b>	Canteen, offices, security, workshops. The BBC also has studio space at Pacific Quay (Glasgow) which is available at times.
Travel	<b>Traffic Noise</b>	
	<b>Closest major road</b>	A82
	<b>Closest major city</b>	Glasgow
	<b>Closest airport</b>	Glasgow
	<b>Closest Accommodation</b>	<a href="#">Dumbarton</a> or <a href="#">Glasgow</a>





# BBC Scotland Pacific Quay



Contact	<b>Name of Site</b>	BBC Scotland – Pacific Quay
	<b>Owner/Company</b>	BBC Scotland
	<b>Contact Name</b>	BBC Scotland Planning Team
	<b>Full Address</b>	40 Pacific Quay, Glasgow G51 1DA
	<b>Telephone</b>	
	<b>Email</b>	<a href="mailto:street.productionfacilities@bbc.co.uk">street.productionfacilities@bbc.co.uk</a>
	<b>Website</b>	<a href="http://www.bbcstreet.co.uk">www.bbcstreet.co.uk</a>
	<b>Previous Productions</b>	<i>Mrs Brown's Boys, Swashbuckle, The Hitlist, Richard Osman's House of Games Unbeatable and Catchpoint</i>
Features	<b>Stages</b>	<b>Studio A:</b> 8,417 sq ft (782 sq m), height 29.5 ft (9 m) <b>Studio B:</b> 2594 sq ft (241 sq m), height 19.6 ft (6 m)
	<b>Production Space</b>	
	<b>Power</b>	
	<b>Soundproofing</b>	Yes
	<b>Blackout / Windows</b>	Yes
	<b>Office Space</b>	
	<b>Vehicle Access Details</b>	24-hour drive-in access
	<b>Parking</b>	Plenty
	<b>Backlot / Hard Standing</b>	
	<b>Telecoms</b>	
	<b>Additional Features</b>	Production office, green rooms, dressing rooms, makeup, wardrobe, laundry, audience handling area and restaurant.
Travel	<b>Traffic Noise</b>	
	<b>Closest Major Road</b>	Govan Road and M8
	<b>Closest Major City</b>	Glasgow
	<b>Closest Airport</b>	Glasgow
	<b>Closest Accommodation</b>	Glasgow





# The Factory Campbeltown



Contact

<b>Name of Site</b>	The Factory, MACC Business Park, Machrihanish
<b>Owner/Company</b>	Highlands & Islands Enterprises (HIE)
<b>Contact Name</b>	Mark Gillies
<b>Full Address</b>	The Factory, Machrihanish, Campbeltown, Argyll & Bute PA28 6NU
<b>Telephone</b>	+44 (0)7787 291149
<b>Email</b>	Mark.gillies@g-s.co.uk
<b>Website</b>	www.g-s.co.uk

## Previous Productions

Features

Stages	Building	Sq Ft	Sq M	Eaves Height
	Building A	62,786 sq ft	5,833 sq m	8.75 m
	Building B	56,113 sq ft	5,213 sq m	11.76 m
	Building C	15,253 sq ft	1,417 sq m	N/A
	Building D	20,214 sq ft	1,877 sq m	11.35 m
	Building E	20,559 sq ft	1,909 sq m	10.00 m
	Building F	38,794 sq ft	3,604 sq m	14.50 m
<b>Production Space</b>	<b>Total Space</b>	<b>213,719 sq ft</b>	<b>19,853 sq m</b>	
<b>Power</b>	Up to 4MVA			
<b>Soundproofing</b>	Not as standard			
<b>Blackout / Windows</b>	Could be retrofitted			
<b>Office Space</b>	15,253 sq ft (1,417 sq m)			
<b>Vehicle Access Details</b>	Drive in.			
<b>Parking</b>	Substantial.			
<b>Backlot / Hard Standing</b>	Total site extends to c.66 acres			
<b>Telecoms</b>	TBC			
<b>Additional Features</b>	Substantial craneage on site			
<b>Traffic Noise</b>	None			

Travel

<b>Closest Major Road</b>	1.8 miles to A83
<b>Closest Major City</b>	<b>Campbeltown</b> (136 miles)
<b>Closest Airport</b>	<b>Campbeltown</b> (1.6 miles)
<b>Closest Accommodation</b>	Crew accommodation available on site at MACC base (basic student style). 12 mins. 7.6 miles to best hotel in the area.



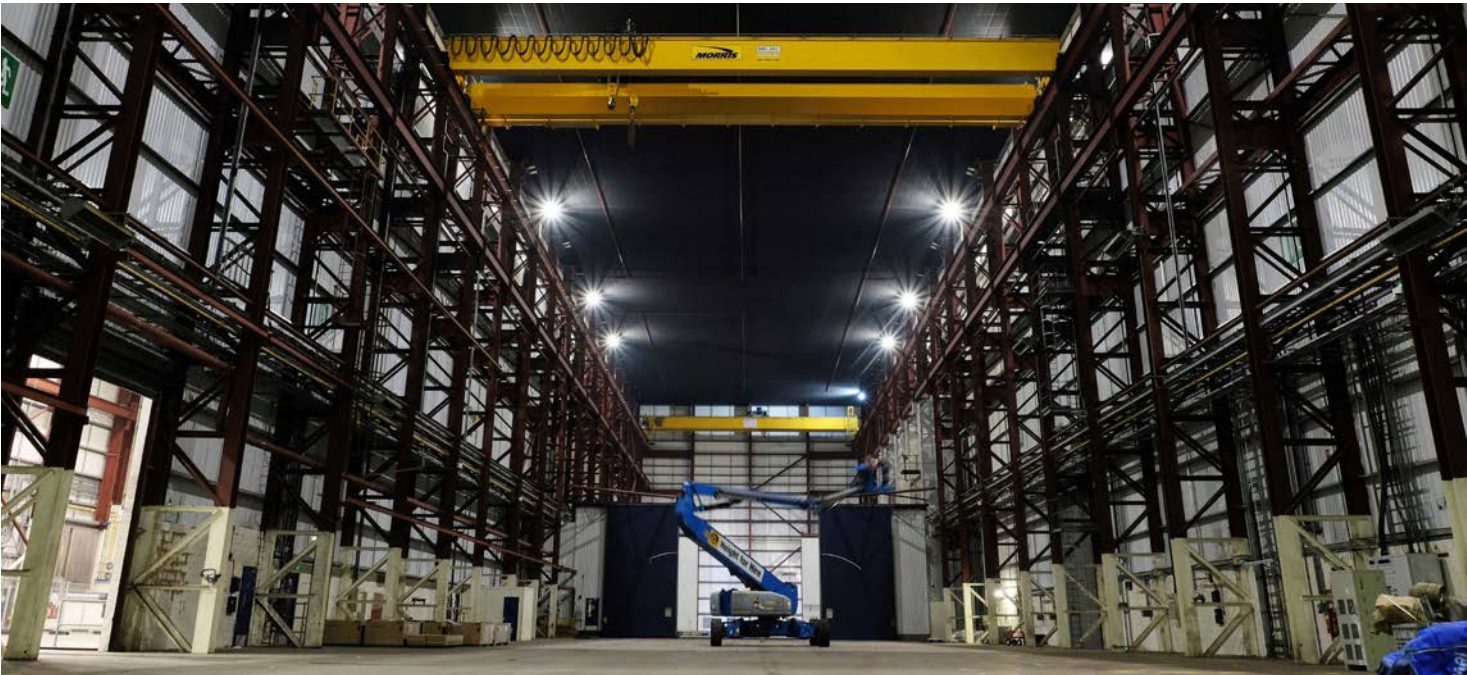




# FirstStage Studios Edinburgh



Contact	<b>Name of Site</b>	FirstStage Studios
	<b>Owner/Company</b>	FirstStage Studios Ltd
	<b>Contact Name</b>	Bob Last, Sophie Williams
	<b>Full Address</b>	31 Bath Road, Leith, Edinburgh EH6 7AH
	<b>Telephone</b>	
	<b>Email</b>	<a href="mailto:sales@firststagestudios.com">sales@firststagestudios.com</a>
	<b>Website</b>	<a href="http://www.firststagestudios.com">www.firststagestudios.com</a>
	<b>Previous Productions</b>	<i>The Rig</i> (Series 1 & 2), <i>Anansi Boys</i> , <i>The Outrun</i> , and various commercials
Features	<b>Stages</b>	<p><b>Stage A:</b> 14,759 sq ft (1,371 sq m) with 20-ton full-reach gantry crane. Height 85 ft (26 m)</p> <p><b>Stage B:</b> 24,000 sq ft (2,230 sq m) with 60-ton full-reach gantry crane. Mother truss. Height 85 ft (26 m)</p> <p><b>Stage C:</b> 24,294 sq ft (2,257 sq m) includes build down space/pit with removable covers. The pit can be filled for water work. Height 63 ft (19 m)</p> <p><b>Stage D:</b> 9,882 sq ft (918 sq m). Height 48 ft (14.6 m)</p>
	<b>Production Space</b>	115,000 sq ft (10,684 sq m) on 8.9 acre site
	<b>Power</b>	Over 3000 amps of 3-phase 240-volt power. 3-phase, 16-amp, 13-amp and 110-volt power available throughout including external hook ups.
	<b>Soundproofing</b>	Yes
	<b>Blackout / Windows</b>	Yes. All stages blacked out.
	<b>Office Space</b>	2 x circa 9,000 sq ft (836 sq m) flexible office spaces.
	<b>Vehicle Access Details</b>	Easy access for large trucks and other vehicles
	<b>Parking</b>	Over 200 vehicles
	<b>Backlot / Hard Standing</b>	Yes
	<b>Telecoms</b>	Ultra-high bandwidth connectivity available throughout the facility through a fibre backbone.
	<b>Additional Features</b>	4 workshops totalling circa 43,000 sq ft (3994 sq m) including mill (workshop 3), various workrooms, laundry and DIT room. On-site rigging and IT services.
	<b>Traffic Noise</b>	N/A
	Travel	<b>Closest Major Road</b>
<b>Closest Major City</b>		Edinburgh, Leith
<b>Closest Airport</b>		Edinburgh International
<b>Closest Accommodation</b>		Convenient location close to the city centre with a wide range of nearby amenities including extensive accommodation of all standards, bars, cafes and Michelin starred restaurants in walking distance.

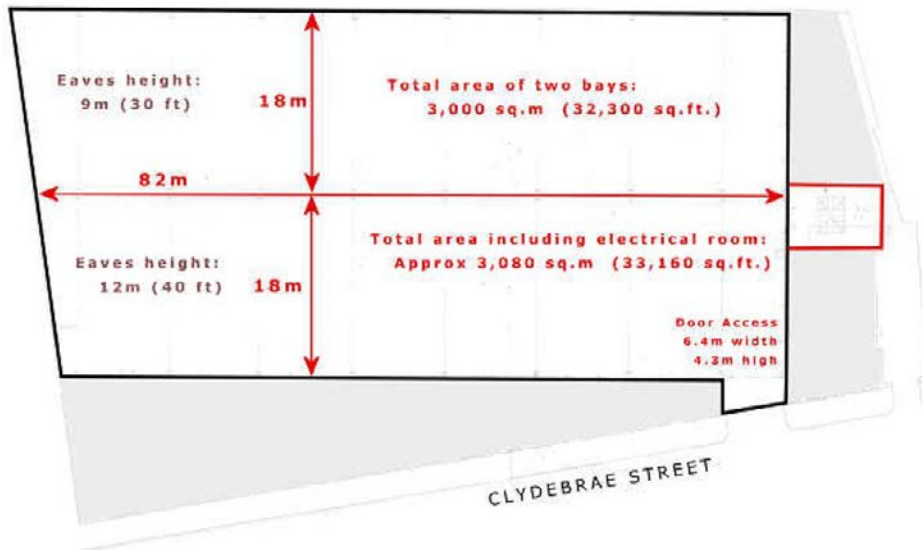


# Govan Shed

## Glasgow



Contact	<b>Name of Site</b>	Govan Shed
	<b>Owner/Company</b>	Embee Properties Ltd
	<b>Contact Name</b>	Neil Macmillan
	<b>Full Address</b>	23 Clydebrae Street, Govan, Glasgow, G51 2AJ
	<b>Telephone</b>	
	<b>Email</b>	office@govan-shed.co.uk
	<b>Website</b>	http://www.govan-shed.co.uk
	<b>Previous Productions</b>	<i>World War Z, Valhalla Rising, 1917, Tetris, Indiana Jones and the Dial of Destiny, Bell Bottom, Annika (Series 1 &amp; 2), Men of Rock, Horizon, Batgirl and Nightsleeper</i>
Features	<b>Stages</b>	32,000 sq ft (2,973 sq m) single warehouse space. Two bays with 29.5 ft (9 m) and 39.4 ft (12 m) eaves height respectively.
	<b>Production Spaces</b>	<b>Green room:</b> 100 sq ft (9.3 sq m) <b>Production Room 1:</b> 100 sq ft (9.3 sq m) <b>Production Room 2:</b> 250 sq ft (23 sq m)
	<b>Power</b>	3-phase, 500A/phase, with around 300A/phase available for use to the main space. 63A 3P+N socket and various 32A 1P+N sockets around space.
	<b>Soundproofing</b>	Minimal
	<b>Blackout / Windows</b>	Partial blackout – all windows blacked out but there is some light spill around the blackout.
	<b>Office Space</b>	Production rooms can be used as office space.
	<b>Vehicle Access Details</b>	Large roller shutter door offers access for almost any HGV, double decker bus etc.
	<b>Parking</b>	Street parking outside for 15 cars on Clydebrae Street. Lane closure option on Govan Road for approx 15 cars.
	<b>Backlot / Hard Standing</b>	None
	<b>Telecoms</b>	None
	<b>Additional Features</b>	Access route for generator cabling to come in without doors being left open.
	<b>Traffic Noise</b>	Govan Road has traffic noise – recommended to close lane and use production vehicles to minimise.
Travel	<b>Closest Major Road</b>	M8 J24
	<b>Closest Major City</b>	Glasgow
	<b>Closest Airport</b>	Glasgow Airport
	<b>Closest Accommodation</b>	Various hotels around BBC Scotland facility all 5 mins walk.



# Nightsky Studios Coatbridge



Contact	<b>Name of Site</b>	Nightsky Studios	
	<b>Owner/Company</b>	Nightsky Productions Ltd	
	<b>Contact Name</b>	Ben Bentley	
	<b>Full Address</b>	Viewfield Park, Viewfield Road, Coatbridge, ML5 5QS	
	<b>Telephone</b>		
	<b>Email</b>	info@wearenightsky.com	
	<b>Website</b>	wearenightsky.com	
	<b>Previous Productions</b>	<i>Two Doors Down, Black Mirror, Deadshot</i>	
Features	<b>Stages</b>	<b>Stage 1:</b> 11,000 sq ft (1022 sq m) <b>Stage 2:</b> 5,500 sq ft and workshop (511 sq m) <b>Stage 3:</b> 6500 sq ft (604 sq m)	
	<b>Production Space</b>	<b>Stage 1:</b> 126 x 92 ft (38.5 x 28 m) 27 ft (8.3 m) rigging height, 24 ft (7.3 m) clear trim <b>Stage 2:</b> 80 x 69 ft (24.5 x 21 m) Eaves 19.6 ft (6 m), apex 24.6 ft (7.5 m) <b>Workshop/Stage 3:</b> 92 x 52 ft (28 x 16 m) Eaves 16.4 ft (5m) apex 19.6 ft (6 m)	
	<b>Power</b>	<b>Stage 1:</b> 2 x 200-amp power lock (or 1 x 400-amp). 2 x 63 / 3-phase <b>Stage 2:</b> 1 x 200-amp power lock. 1 x 125-amp 3-phase. 1 x 63-amp 3-phase <b>Workshop/Stage 3:</b> 1 x 63 amp 3-phase	
	<b>Soundproofing</b>	<b>Stage 1</b> - 400 mm insulation - 200 mm high density foam, 200 mm Rockwool, 250 gsm Drape. <b>Stage 2</b> - 150 mm of closed cell insulation on roof and walls.	
	<b>Blackout / Windows</b>	Both units blackout	
	<b>Office Space</b>	6 x green room 1 x Production office 1 x Board room 4 x Multi function rooms	
	<b>Vehicle Access Details</b>	<b>Unit 1</b> - 4 x 4 m roller shutter <b>Unit 2</b> - 3 of 2.2 x 2.2 m roller shutter with loading docks	
	<b>Parking</b>	200 spaces plus unit base	
	<b>Backlot / Hard Standing</b>	Approx 80,000 sq ft of parking space.	
	<b>Telecoms</b>	1 GB up and down fibre. No phone lines currently connected.	
	<b>Additional Features</b>	Full turnkey virtual production set with ability to have up to 30 x 5 m screen, can be configured in any dimension.	
	<b>Traffic Noise</b>	No traffic noise	
	Travel	<b>Closest Major Road</b>	A8
		<b>Closest Major City</b>	Glasgow
<b>Closest Airport</b>		<b>Glasgow</b> - 18.6 miles <b>Edinburgh</b> - 30.6 miles	
<b>Closest Accommodation</b>		<b>Glasgow:</b> 3 miles - Double Tree by Hilton. 3.7 miles - Dakota Eurocentral	



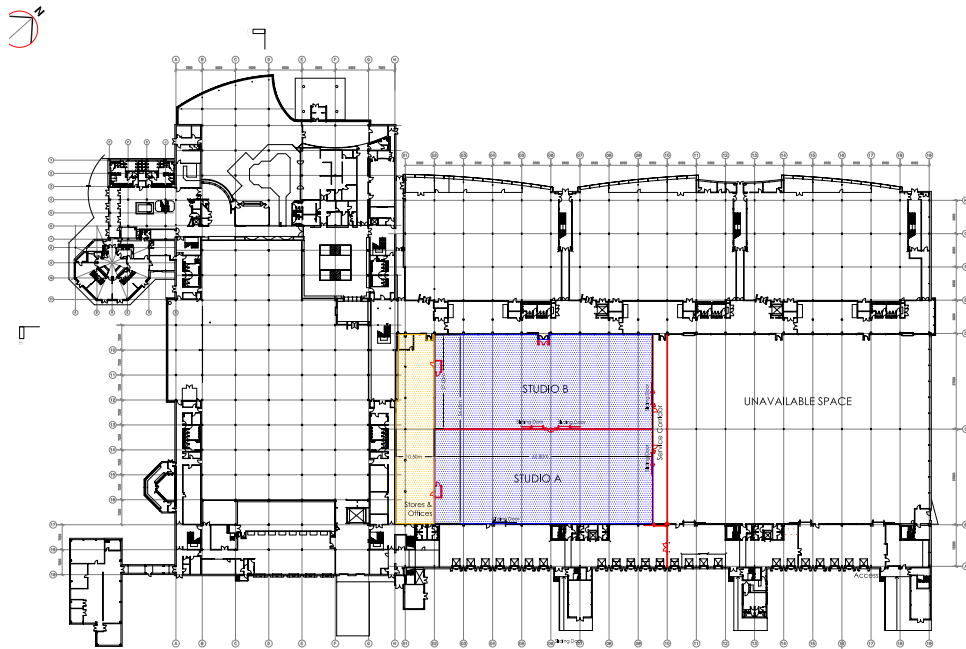
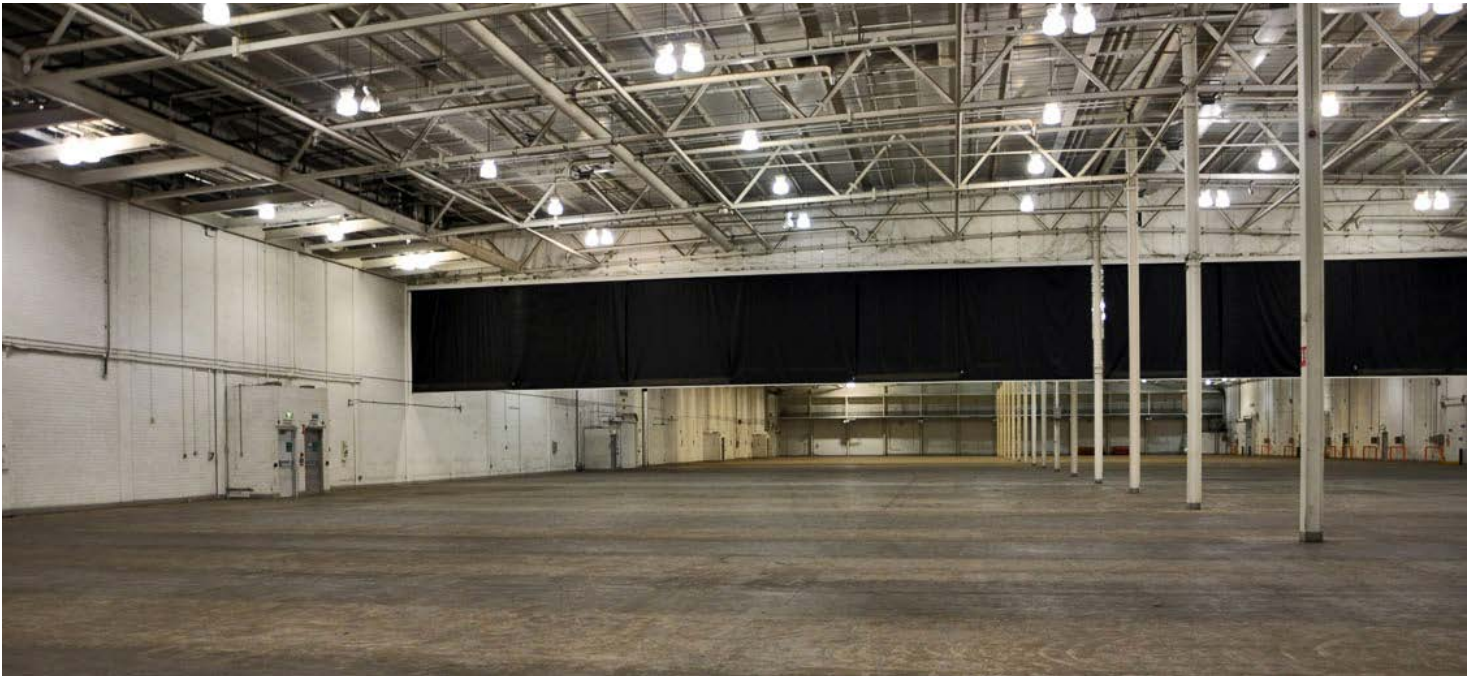
# Pyramids Business Park Bathgate



Contact	<b>Name of Site</b>	Pyramids Studios (Business Park)	
	<b>Owner/Company</b>	The MBSGroup	
	<b>Contact Name</b>	Jelena Blazic	
	<b>Full Address</b>	Pyramid Studios (Business Park), Easter Inch, Bathgate, West Lothian, EH48 2WX	
	<b>Telephone</b>	<b>O:</b> +44 (0) 1753987888 / <b>M:</b> +44 (0) 7552 120 108	
	<b>Email</b>	jblazic@the-mbsgroup.com	
	<b>Website</b>	Under construction	
	<b>Previous Productions</b>	<i>Good Omens II</i> (Amazon/BBC), <i>The Buccaneers</i> (Apple TV+), <i>Shetland</i> (BBC), <i>Eurovision</i> (Netflix), <i>Outlaw King</i> (Netflix), <i>T2 Trainspotting</i> (TriStar), Various PSB's	
Features	<b>Stages</b>	<b>Stage 1:</b> 44,787 sq ft (4,161 sq m)      Height 38 ft (11.6 m) (31 ft to truss) including supporting units and backlot.	
		<b>Stage 2:</b> 60,481 sq ft (5,619 sq m)      Height 38 ft (11.6 m) (31 ft to truss) including supporting units and backlot.	
	<b>Production Spaces</b>	150,000 sq ft (13,935 sq m) of flexible production space, workshops and offices.	
	<b>Power</b>	3-phase	
	<b>Soundproofing</b>	Partial	
	<b>Blackout / Windows</b>	Blackout - Yes	
	<b>Office Space</b>	Yes	
	<b>Vehicle Access Details</b>	Elephant Doors	
	<b>Parking</b>	1,300 spaces	
	<b>Backlot / Hard Standing</b>	Extensive backlot and hardstanding	
	<b>Telecoms</b>	Fibre connection	
	<b>Additional Features</b>	24-hour security, on-site café/catering, gym and nursery	
	<b>Traffic Noise</b>	Minimal	
Travel	<b>Closest Major Road</b>	M8 Junction 3A (1 mile away)	
	<b>Closest Major City</b>	<b>Edinburgh (EH1)</b> - 20 miles/31 mins <b>Glasgow (G1)</b> - 29 miles/33 mins	
	<b>Closest Airport</b>	<b>Edinburgh International Airport (EDI)</b> - 13 miles/17 mins <b>Glasgow International Airport (GLA)</b> - 38 miles/40 mins	
	<b>Closest Accommodation</b>	Hotels adjacent (2 miles/5 mins) and unlimited beds within 20 mins	





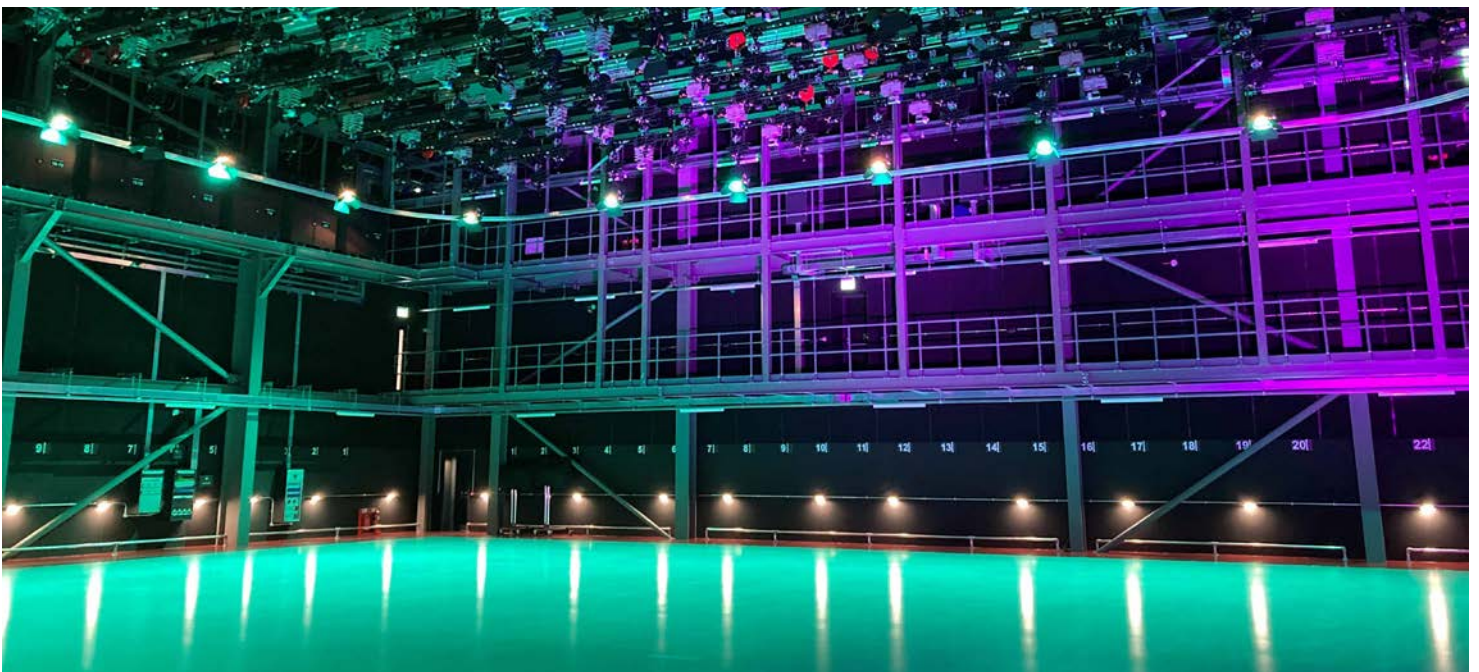


# Studioworks Kelvin Hall Glasgow

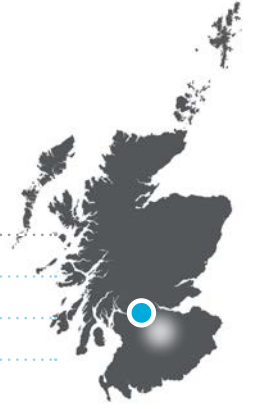


Contact	<b>Name of Site</b>	BBC Studioworks Kelvin Hall Studio
	<b>Owner/Company</b>	BBC Studioworks
	<b>Contact Name</b>	Stuart Guinea
	<b>Full Address</b>	1445 Argyle Street Glasgow, G3 8AW
	<b>Telephone</b>	
	<b>Email</b>	<a href="mailto:hello@bbcstudioworks.com">hello@bbcstudioworks.com</a>
	<b>Website</b>	<a href="http://www.bbcstudioworks.com">www.bbcstudioworks.com</a>
Features	<b>Previous Productions</b>	<i>Bridge Of Lies, Frankie Boyle's New World Order</i>
	<b>Stages</b>	1 x 10,500 sq ft (975 sq m)
	<b>Production Space</b>	Floor space 115 x 92 ft (35 x 28 m), Height 33 ft (10.2 m)
	<b>Power</b>	630A TPN
	<b>Soundproofing</b>	Fully sound proofed
	<b>Blackout / Windows</b>	Full blackout
	<b>Office Space</b>	4 x Production offices
	<b>Vehicle Access Details</b>	Direct Truck access via Old Dumbarton Road
	<b>Parking</b>	Bunhouse Road car park
	<b>Backlot / Hard Standing</b>	None
	<b>Telecoms</b>	High speed fibre
Travel	<b>Additional Features</b>	12 Ensuite dressing rooms, makeup and wardrobe facilities, group room, green room, catering kitchen, production, sound and lighting galleries. Motorised scenic and lighting hoist system. Crew booking service when using the studio. Sustainability at the core of the design.
	<b>Traffic Noise</b>	None
	<b>Closest Major Road</b>	Argyle Street
	<b>Closest Major City</b>	Glasgow
	<b>Closest Airport</b>	Glasgow Airport
	<b>Closest Accommodation</b>	Glasgow Hotels





# Wardpark Studios Cumbernauld



Contact	<b>Name of Site</b>	Wardpark Film and Television Studios
	<b>Owner/Company</b>	The MBS Group
	<b>Contact Name</b>	Jelena Blazic
	<b>Full Address</b>	Wardpark Film and Television Studios, Wyndford Road, Cumbernauld, Glasgow, G68 0BA
	<b>Telephone</b>	<b>O:</b> +44 (0)1753987888   <b>M:</b> +44 (0)7552 120 108
	<b>Email</b>	jblazic@the-mbsgroup.com
	<b>Website</b>	www.wardparkstudios.co.uk
	<b>Previous Productions</b>	<i>Outlander</i> – Series 1-8 (Sony Pictures Television/Starz) <i>Blood Of My Blood</i> – Series 1 (Sony Pictures Television/Starz)
Features	<b>Stages</b>	<b>A Stage</b> – 13,400 sq ft (1,244.9 sq m) Height 40 ft (12 m) <b>B Stage</b> – 11,500 sq ft (1,068.4 sq m) Height 21-30 ft (6.4 – 9.1 m) <b>C Stage</b> – 9,700 sq ft (901.2 sq m) Height 24 ft (7.3 m) <b>D Stage</b> – 11,200 sq ft (1,040.5 sq m) Height 24 ft (7.3 m) <b>E Stage</b> – 5,500 sq ft (511 sq m) Height 22 ft (6.7 m) <b>F Stage</b> – 14,000 sq ft (1,300.6 sq m) Height 25 ft (7.6 m) <b>G Stage</b> – 5,500 sq ft (511 sq m) Height 18 ft (5.5 m)
	<b>Production Spaces</b>	150,000 sq ft (13,935 sq m) of flexible production space, workshops and offices – full facilities
	<b>Power</b>	3-phase power supply
	<b>Soundproofing</b>	Yes
	<b>Blackout / Windows</b>	Yes
	<b>Office Space</b>	Yes
	<b>Vehicle Access Details</b>	Roller shutter access throughout
	<b>Parking</b>	300 spaces and offsite parking
	<b>Backlot / Hard Standing</b>	12-acre site with hard standings
	<b>Telecoms</b>	Fibre connection
	<b>Additional Features</b>	24-hour security, full scope of facilities from dye room, paint, plaster shops, construction, costume, post-production
	<b>Traffic Noise</b>	None
Travel	<b>Closest Major Road</b>	M80 Junction 6 (1 mile)
	<b>Closest Major City</b>	<b>Glasgow (G1)</b> - 15 miles/21 mins <b>Edinburgh (EH1)</b> - 38 miles/47 mins
	<b>Closest Airport</b>	<b>Glasgow (GLA)</b> - 24 miles/29 mins <b>Edinburgh (EDI)</b> - 29 miles/32 mins <b>Cumbernauld Airport</b> - 1 mile/2 mins
	<b>Closest Accommodation</b>	Hotels adjacent (2 miles/5 mins) and unlimited beds within 20 mins.

